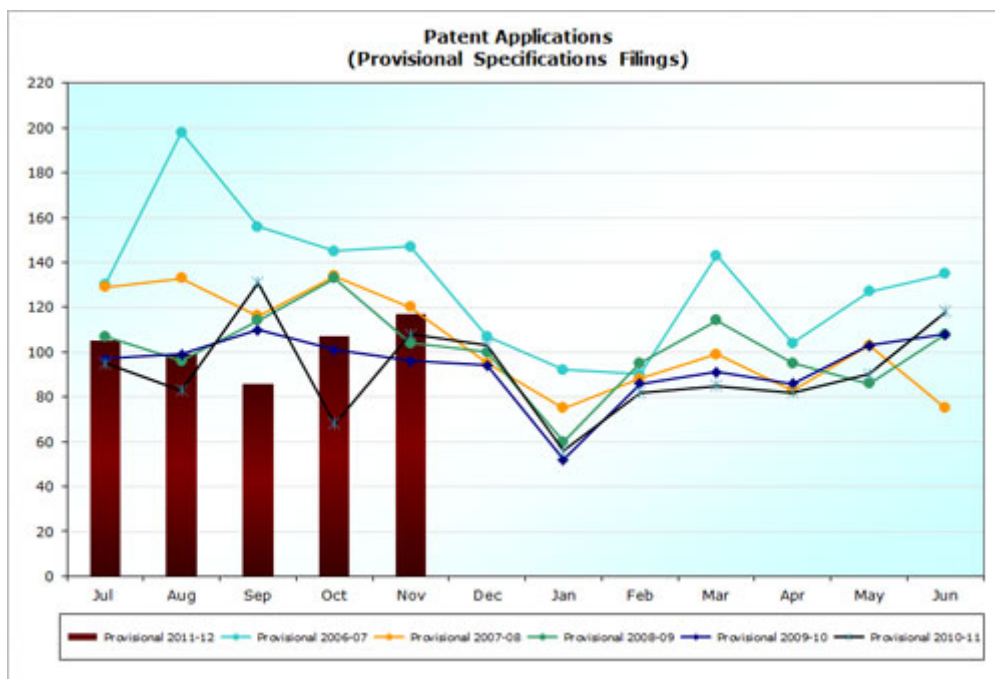
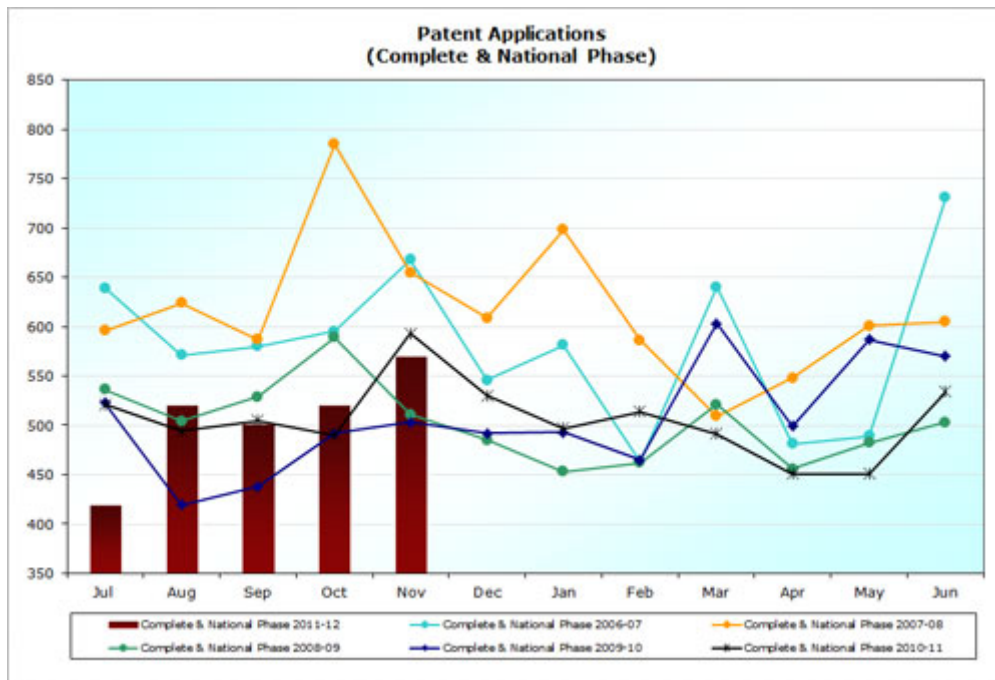


## Facts and figures

### Patent applications



Jul Aug Sep Oct Nov Dec Jan Feb Mar Apr May Jun Total

Complete & National Phase 2006-07	639	571	580	595	668	546	581	463	640	481	489	731	<b>6984</b>
Complete & National Phase 2007-08	596	624	587	785	655	609	698	586	509	548	601	605	<b>7403</b>
Complete & National Phase 2008-09	536	504	529	589	511	485	452	462	492	456	482	503	<b>6001</b>
Complete & National Phase 2009-10	523	419	438	492	503	492	493	465	603	499	587	570	<b>6084</b>
Complete & National Phase 2010-11	521	494	505	490	499	530	497	514	491	451	534	543	<b>6163</b>
<b>Complete &amp; National Phase 2011-12</b>	<b>418</b>	<b>520</b>	<b>501</b>	<b>520</b>	<b>569</b>								<b>2528</b>

---

	<b>Jul</b>	<b>Aug</b>	<b>Sep</b>	<b>Oct</b>	<b>Nov</b>	<b>Dec</b>	<b>Jan</b>	<b>Feb</b>	<b>Mar</b>	<b>Apr</b>	<b>May</b>	<b>Jun</b>	<b>Total</b>
Provisional 2006-07	130	198	156	145	147	107	92	90	143	104	127	135	<b>1574</b>
Provisional 2007-08	129	133	116	134	120	95	75	88	99	83	103	75	<b>1250</b>
Provisional 2008-09	107	96	114	133	103	99	59	95	114	95	86	108	<b>1209</b>
Provisional 2009-10	97	99	110	101	96	94	52	86	91	86	103	108	<b>1123</b>
Provisional 2010-11	95	83	131	68	108	103	56	82	85	82	90	118	<b>1101</b>
<b>Provisional 2011-12</b>	<b>105</b>	<b>99</b>	<b>86</b>	<b>107</b>	<b>117</b>								<b>514</b>

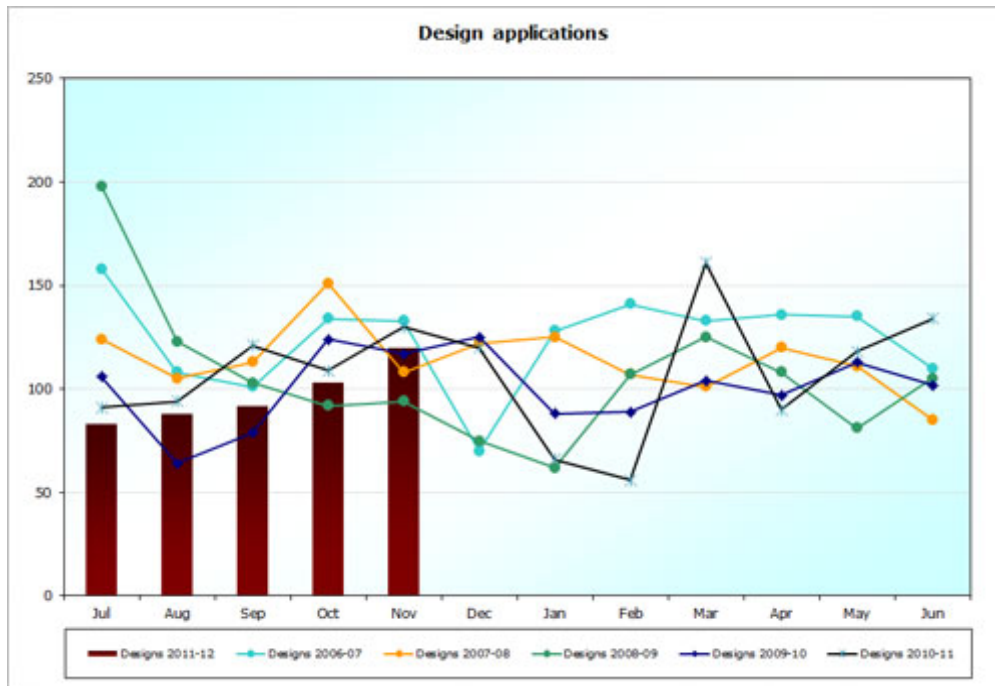
---

## Trade mark applications and classes



	Jul	Aug	Sep	Oct	Nov	Dec	Jan	Feb	Mar	Apr	May	Jun	Total
Classes 2006-07	3017	3327	3084	3186	3117	2568	2409	2572	3194	2676	3353	3227	<b>35730</b>
Classes 2007-08	3166	3675	3208	3361	3131	2688	2798	2714	2792	2933	3229	2814	<b>36509</b>
Classes 2008-09	2845	2824	2942	2724	2423	2311	1728	2101	2483	2471	2410	2458	<b>29720</b>
Classes 2009-10	2800	2496	2782	2730	2348	2566	1619	2305	2755	3071	2691	2685	<b>30848</b>
Classes 2010-11	2975	2788	2731	2386	2540	2793	1865	2369	2896	2828	2765	2968	<b>31904</b>
<b>Classes 2011-12</b>	<b>2799</b>	<b>3122</b>	<b>2708</b>	<b>2651</b>	<b>2664</b>								<b>13944</b>

### Design applications



	Jul	Aug	Sep	Oct	Nov	Dec	Jan	Feb	Mar	Apr	May	Jun	Totals
Designs 2006-07	158	108	101	134	133	70	128	141	133	136	135	110	<b>1487</b>
Designs 2007-08	124	105	113	151	108	122	125	107	101	120	111	85	<b>1372</b>
Designs 2008-09	198	123	103	92	94	75	62	107	125	108	81	105	<b>1273</b>
Designs 2009-10	106	64	79	124	117	125	88	89	104	97	113	102	<b>1208</b>
Designs 2010-11	91	94	121	109	130	120	66	56	161	90	118	134	<b>1290</b>

## Requesting Statistics

IPONZ can also provide other useful statistical data from the IPONZ database. To request data, please complete the Request for Statistical Data form below.

**Note** | The information you want may not be readily available from our database. IPONZ will contact you to provide an obligation free quote or to discuss the availability of the information you require.

[Request for Statistical Data form](#)

The form requires Adobe Acrobat Reader 7 or above. If you have any problems with submitting the request please [contact us](#).